

**AXOR MyEdition**  
**Single lever basin mixer floor-standing with push-open waste set**  
 Surfaces: **Chrome/Mirror Glass** Article Number: **47040000**



### product features

- consists of: single lever basin mixer, plate, waste set
- projection 196 mm
- plate of glass made of safety glass
- spray type: PowderRain
- maximum flow rate at 3 bar: 5 l/min
- ceramic cartridge
- temperature limitation adjustable
- with isolated water conduction - without contact with nickel and lead
- suitable for continuous flow water heaters
- connection type: basic set
- connection dimension: DN15
- push-open waste set G 1¼

### Technology



### Design awards



reddot winner 2020

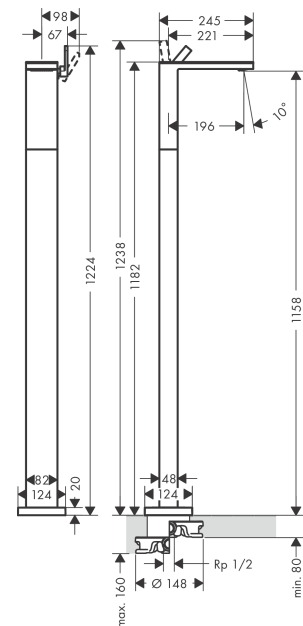


reddot winner 2021

### Product image



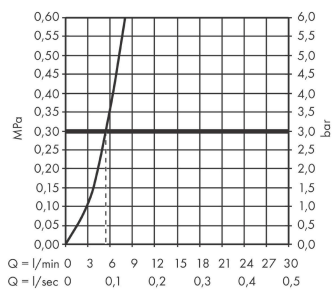
### Scale drawing



**AXOR MyEdition**  
**Single lever basin mixer floor-standing with push-open waste set**  
Surfaces: **Chrome/Mirror Glass** Article Number: **47040000**



## Flowchart

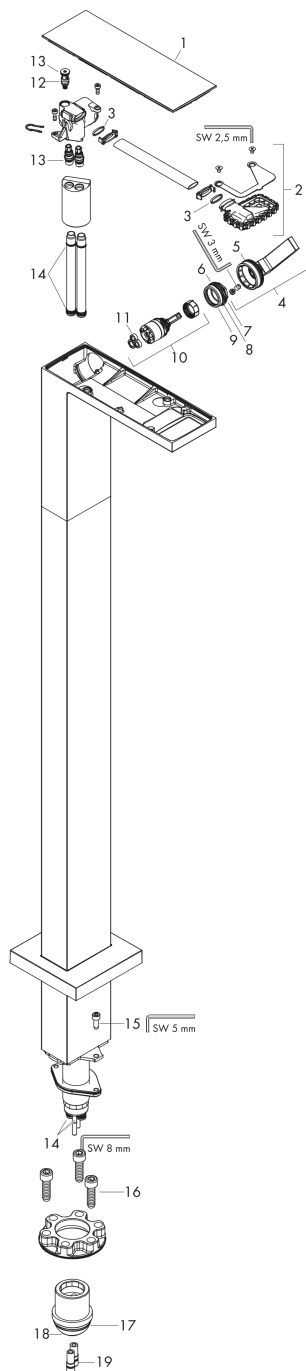


**AXOR MyEdition**  
**Single lever basin mixer floor-standing with push-open waste set**  
 Surfaces: **Chrome/Mirror Glass** Article Number: **47040000**



## Exploded Drawing

Year of production: >10/18



**AXOR MyEdition**  
**Single lever basin mixer floor-standing with push-open waste set**  
 Surfaces: **Chrome/Mirror Glass** Article Number: **47040000**



## Spare part list

Year of production: >10/18

Pos.		Article Number	Price	PU
1	cover	47901000	-	1
2	spray former	93385000	-	1
3	O-ring 13x1,5	98475000	-	1
4	handle	93386000	-	1
5	O-ring 33x1,5	98164000	-	1
6	nut	92926000	-	1
7	O-ring 30x1,5	98433000	-	1
8	O-ring 25x1,5	98146000	-	1
9	O-ring 29x2	98391000	-	1
10	cartridge, assy	92900000	-	1
11	seal	93383000	-	1
12	service unit	93384000	-	1
13	O-ring 8x1,75	97827000	-	1
14	O-ring 9x1,5	98117000	-	1
15	hexagon socket screw M6x16	92857000	-	1
16	hexagon socket screw M10x35	97670000	-	1
17	O-ring 44x2,5	98162000	-	1
18	O-ring 29x3	98371000	-	1
19	O-ring 7x2	98419000	-	1
a	extension set 60 mm	97686000	-	1