

Mariposa Sofa

Edward Barber & Jay Osgerby, 2014



Mariposa Sofa, Iroko cover fabric

The variously sized sofas of the Mariposa family are cosy and inviting, yet with a modern touch. They owe their extraordinary comfort to the pleasantly soft upholstery and an ingenious adjustment mechanism, which makes it possible to individually adapt the side and backrest elements for various sitting or reclining positions. The Mariposa sofas do not openly display their functional features: the slim side and back elements can be continuously and silently adjusted, from an upright position to an outward angle of approximately 30° and

back again. The resistance is calibrated in such a way that these elements stay in place when the sitter leans back in a normal fashion, but will adjust to the desired angle when intentional pressure is applied. This flexibility allows individual users to determine the position that is most comfortable for them.

Materials

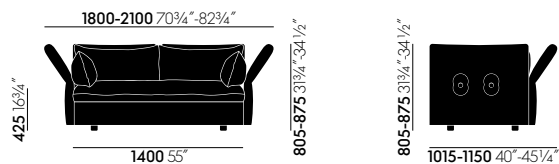
- **Structural frame:** webbed metal frame with polyurethane foam.
- **Seat cushions:** polyurethane and visco foams with chamber cushion overlay. Chamber cushion overlay filled with feathers and PU rods.
- **Back and armrest cushions:** chamber cushion filled with stripped-quill feathers and PU rods.
- **Covers:** removable.
- **Seat height:** 425 mm (280 mm with applied load, measured in accordance with EN 1335-1).
- **Glides:** plastic glides with levelling adjustment.
- **Note:** cushions should be regularly shaken and plumped to retain their fullness and shape.
- **Applications:** recommended for home use only.



Edward Barber & Jay Osgerby

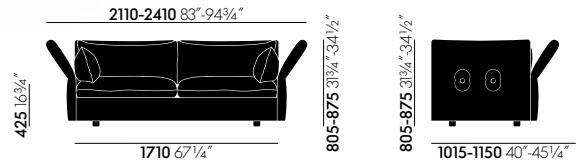
Edward Barber and Jay Osgerby studied architecture as fellow students at the Royal College of Art in London. Since that time, their collaborative work has probed the interface between industrial design, furniture design and architecture.

1	Mariposa	6	Functional sofa	17	Useful facts about covers materials
2-5	Collection overview	7	Upholstery construction	18	Care instructions
		8-16	Cover materials		



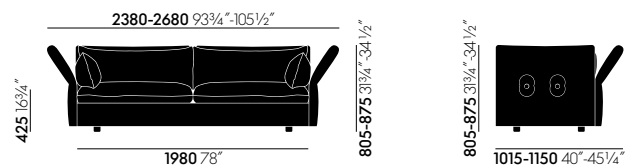
Mariposa 2-Seater

The Mariposa 2-Seater is an ideal choice for urban apartments with limited space, where it offers abundant comfort. The single seat cushion stretching along its full length gives the sofa an elegant and generous feel that belies its compact dimensions.



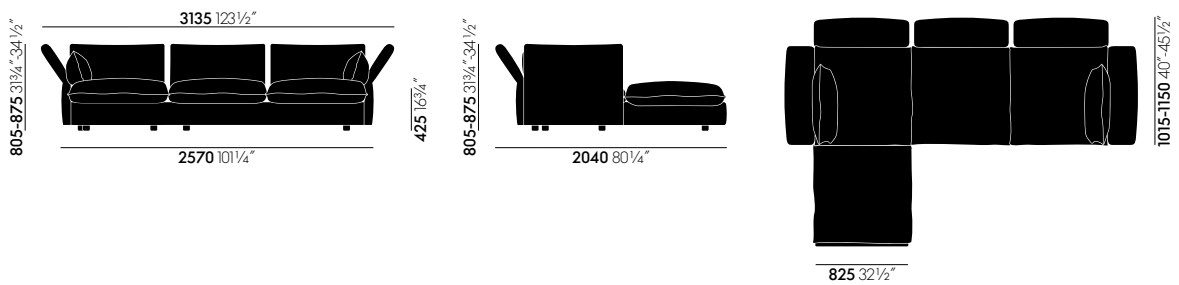
Mariposa 2 1/2-Seater

The Mariposa 2 1/2-Seater is the intermediate sized model – and despite its name, this compact design offers plenty of space and excellent comfort for up to three people. The 2 1/2-Seater is outfitted with two soft seat cushions.



Mariposa 3-Seater

This generously proportioned 3-Seater sofa offers ample room and soft comfort for the entire family.



Mariposa Corner

This comfortable corner sofa provides additional seating space and is just the right configuration for many interior settings.



Mariposa Ottoman

Matching the soft shapes of the sofa, two ottomans combine beautifully with the various sofa sizes. They feature a distinctive seam exactly aligned to the height of the cushion seams on the sofa, emphasising their place in the Mariposa family.



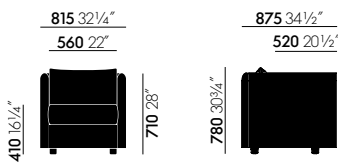
Mariposa Club Armchair, Aura cover fabric

The Mariposa Club Armchair and Mariposa Club Swivel Armchair are ideally suited for use in lounge and hospitality settings. Unlike the sofas of the Mariposa family, they do not have adjustable side panels and backrests. However, despite comparatively smaller dimensions, the armchairs echo the

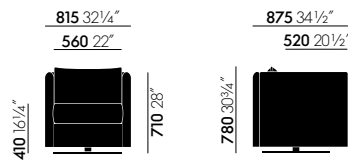
design of their larger Mariposa counterparts, offering pleasantly soft upholstery and a high degree of comfort – on the Swivel Armchair version this is further enhanced by a flat swivel base with an auto-return mechanism. The covers come in a wide selection of robust fabrics and an extensive choice of colours.

Materials

- **Structural frame:** webbed metal frame with polyurethane foam.
- **Seat cushions:** multilayer PU foam upholstery.
- **Back cushions:** foam cube and ball fibre filling; back cushions attached to backrest by zip fastener.
- **Seat height:** 410 mm (309 mm with applied load, measured in accordance with EN 1335-1).
- **Covers:** removable.
- **Glides:** plastic glides with levelling adjustment.
- **Swivel plate (Swivel Armchair):** metal, black powder-coated finish.



Mariposa Club Armchair



Mariposa Club Swivel Armchair

The Mariposa Sofa does not openly display its functional features: the slim side and back elements can be individually adjusted – continuously and silently – from an upright position to an outward angle of approximately 30° and back again. The resistance is calibrated in such a way that the supporting panels stay in place when the sitter leans back in a normal manner, but will adjust to the desired angle when intentional pressure is applied. This flexibility allows individual users to determine the position that is most comfortable for them.

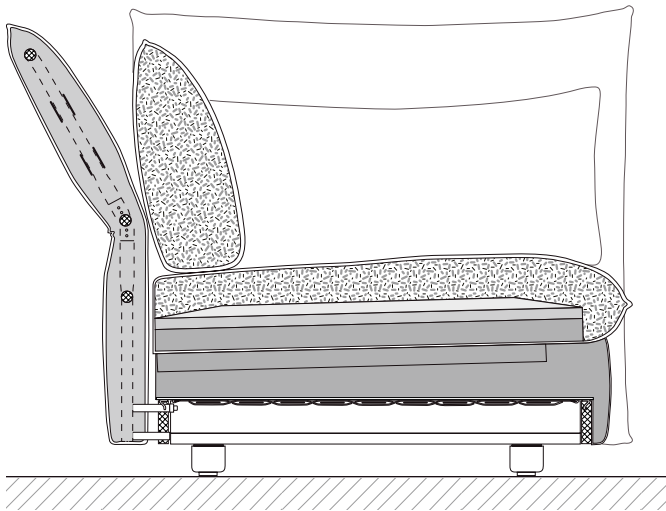
Thanks to the unusual depth of the seat surface, two people can sit on either end and comfortably face each other – to carry on a conversation or share a cosy spot for reading. With these special features, the Mariposa Sofa offers an inviting place to prop up your feet and relax.



Function of the arm- and backrest elements



Sectional drawing of the upholstery construction

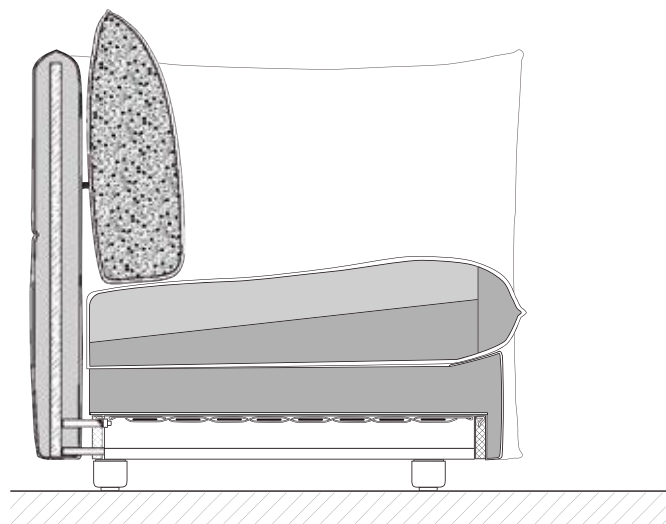


Mariposa Sofa

The padding on the webbed frame is made of foam in two different densities with varying degrees of firmness. The detachable seat cushions have a visco and polyurethane foam core surrounded by a chamber cushion filled with feathers and polyurethane rods. This upholstery technique allows users to sink in, providing comfort in both seated and reclined positions.

The individually adjustable side and back panels consist of a hinged frame with upholstery webbing, covered with polyurethane foam and fibre padding.

The loose back and armrest cushions are chamber cushions, filled with stripped-quill feathers and polyurethane rods.

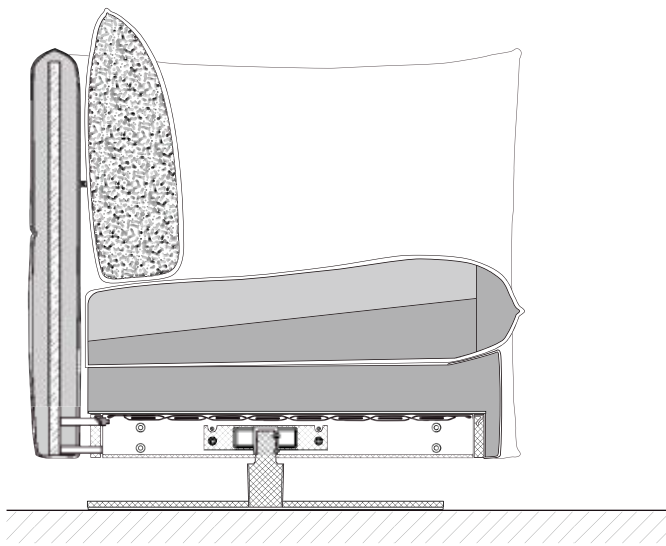


Mariposa Club Armchair

The seat comprises a metal frame with a webbed suspension system and an upholstery structure of polyurethane foam. The actual seat cushion sits loosely on top and consists of polyurethane foam in varying degrees of firmness. This complex construction ensures excellent comfort.

The softly upholstered back and side panels have a wooden core, which complements their soft comfort with the necessary stability. The voluminous backrest cushion is attached to the back panel with a zip fastener. Designed as chamber cushion, it is filled with polyurethane foam cubes and polyester ball fibres.

The Mariposa Club Armchair has short legs with anti-skid, plastic levelling glides for adapting to uneven floors.



Mariposa Club Swivel Armchair

The Swivel Armchair is mounted on a column with a round metal swivel base in a black powder-coated finish. An integrated auto-return mechanism ensures that the armchair always rotates back to its original position.

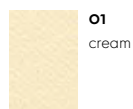
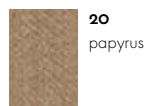
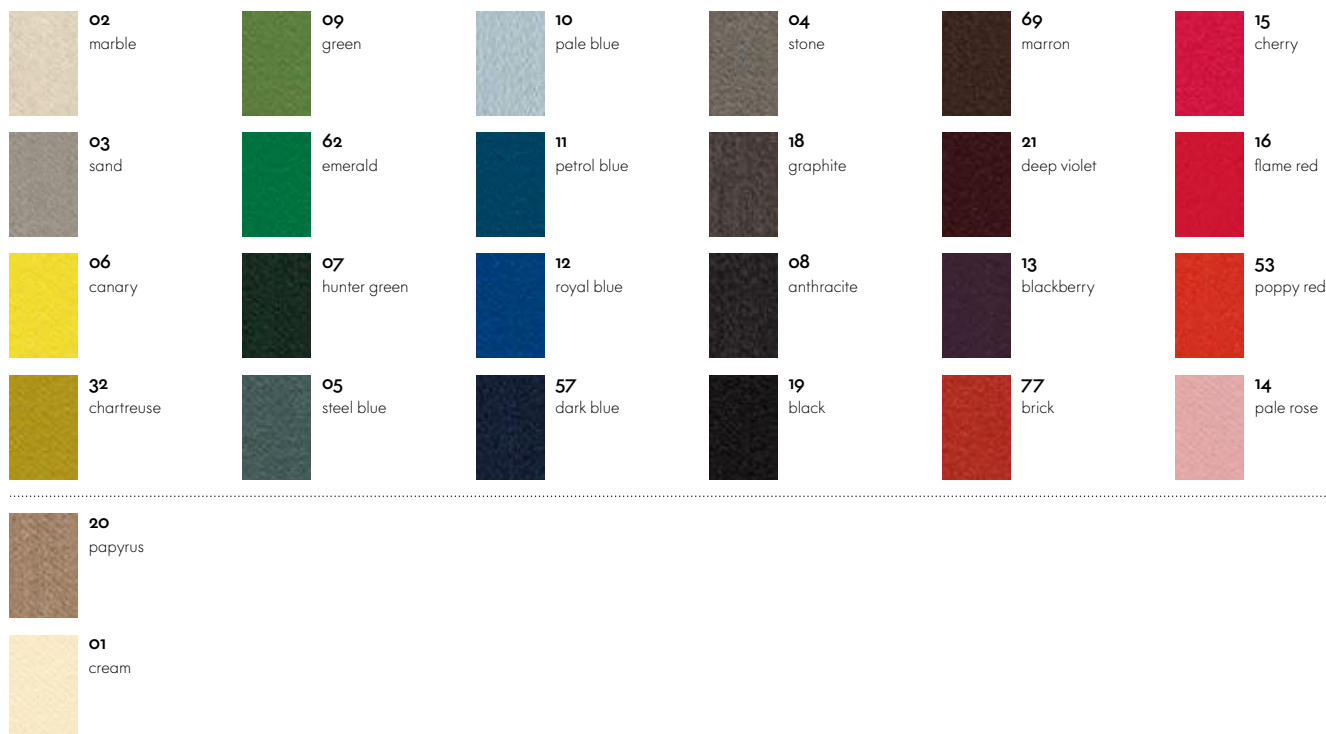
Aura Home, F100



The woollen textile Aura has a classic satin (atlas) weave with a fine, soft surface. This fabric is distinguished by a supremely soft feel, lustrous sheen and smooth even surface. The solid and mixed colours feature dynamic, highly saturated tones made possible by wool's excellent dyeability.

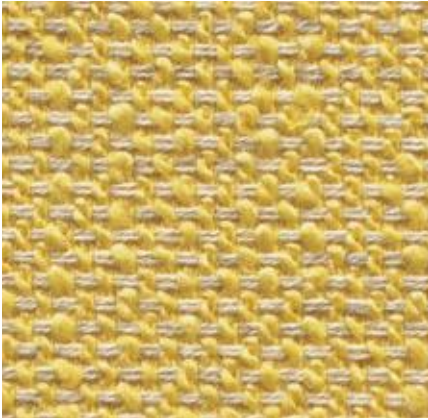
Aura is available in 26 colours.

Material	3% polyamide, 97% new wool
Weight	390 g/m ² (11.5 oz/y ²)
Width	144 cm +/- 2 cm (56")
Abrasion resistance	20,000 Martindale
Fastness to light	Type 5
Pilling	Grade 3-4
Fastness to rubbing	Grade 3-4 dry and wet



Corsaro Home, F8o

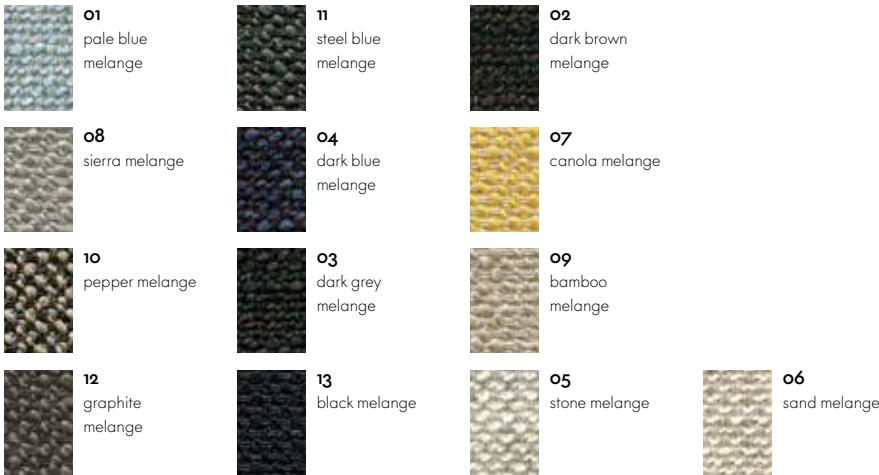
vitra.



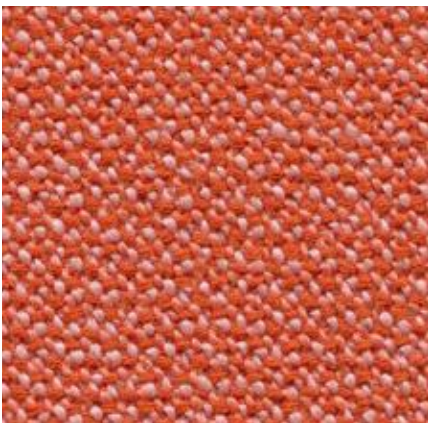
Corsaro is a sophisticated combination of fine and coarse yarns that give the fabric a natural look with a Mediterranean flair. The two-tone and three-tone shades interwoven with several novelty yarns add particular vibrancy to large surface areas.

Corsaro is available in 13 colours.

Material	5% polyamide, 10% cotton, 46% polyacrylics, 5% linen, 20% wool, 14% polyester
Weight	450 g/m ² (13.3 oz/y ²)
Width	140 cm +/- 2 cm (55")
Abrasion resistance	35,000 Martindale
Fastness to light	Type 5
Pilling	Grade 3-4
Fastness to rubbing	Grade 3-4 dry and wet



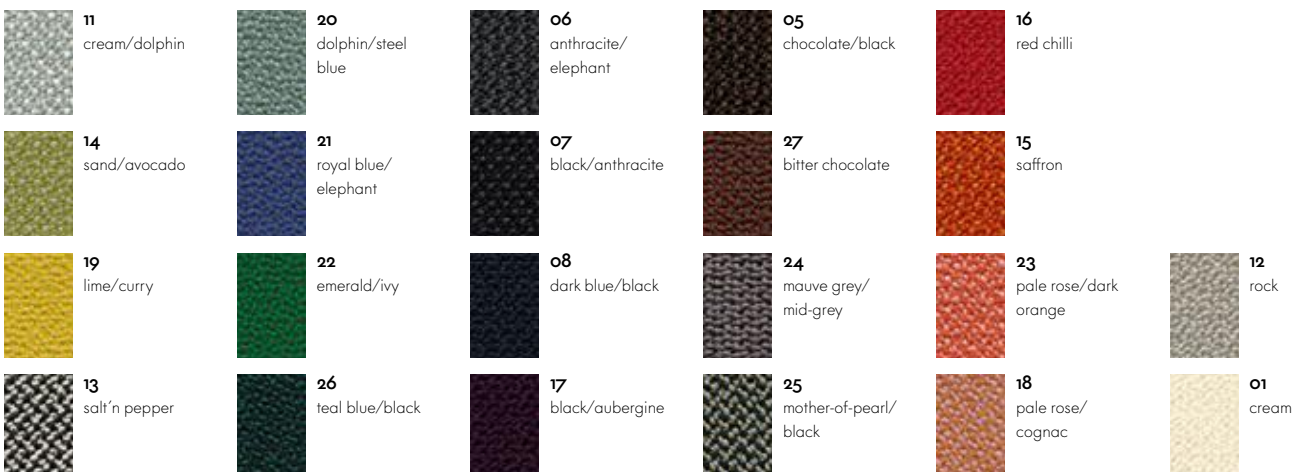
Credo Home/Office, F12o



Credo is a durable woollen fabric made of premium worsted yarn with a pleasant feel. The two- and three-tone colours give this fabric a characteristic structure and vibrant appearance. Credo allows for an effective exchange of heat to ensure comfortable thermal conditions for the sitter. The fabric can also be used in office environments.

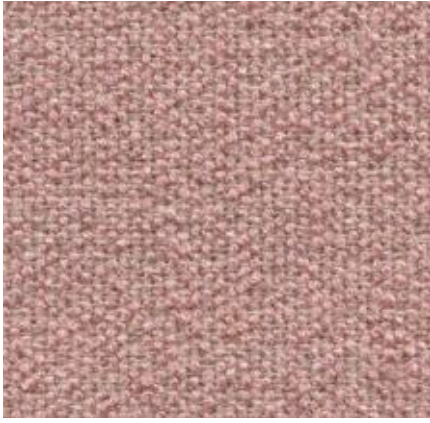
Credo is available in 22 colours.

Material	5% polyamide, 95% new wool
Weight	640 g/m ² (18.9 oz/y ²)
Width	145 cm +/- 2 cm (57")
Abrasion resistance	100,000 Martindale
Fastness to light	Type 6
Pilling	Grade 4-5
Fastness to rubbing	Grade 4-5 dry and wet



Dumet Home, F8o

vitra.



Dumet is a cotton blend in a plain weave with a lively appearance. The natural mixed tones create an elegant look with an Italian flair. Dumet is soft and cool to the touch.

Dumet is available in 20 colours.

Material	9% polyamide, 46% cotton, 8% linen, 22% wool, 15% rayon
Weight	485 g/m ² (14.3 oz/y ²)
Width	147 cm +/- 2 cm (57")
Abrasion resistance	40,000 Martindale
Fastness to light	Type 5
Pilling	Grade 3-4
Fastness to rubbing	Grade 3-4 dry and wet



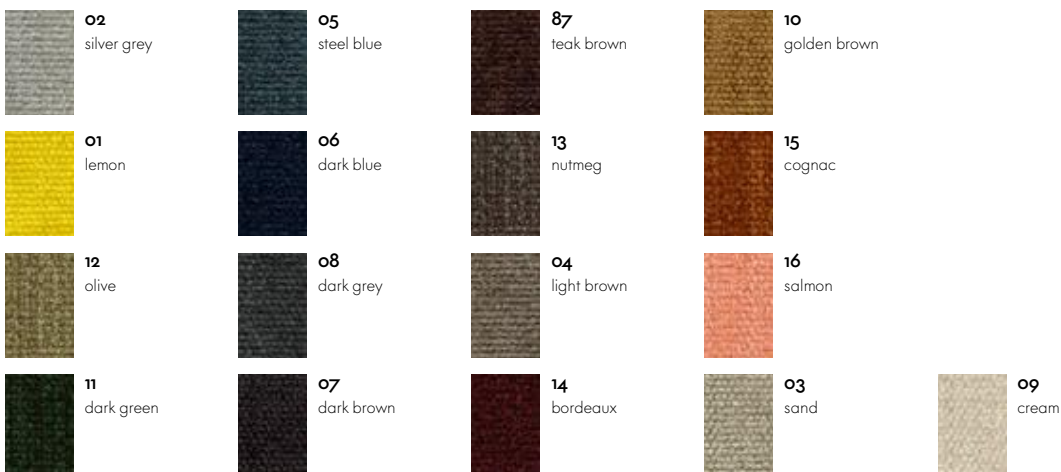
Iroko 2 Home, F8o



Iroko 2 is a soft, flat woven fabric made with chenille yarn. The piles in the yarn give the weave a lively surface texture with an inviting, velvety touch. The fabric's cotton fibres provide excellent cooling properties.

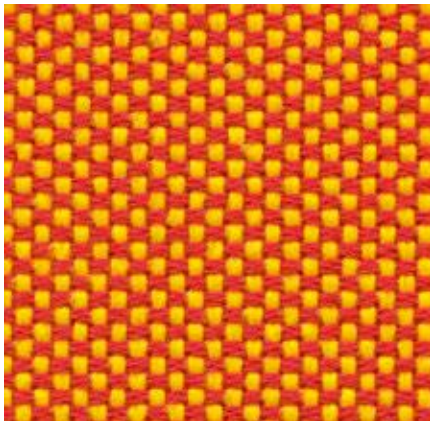
Iroko 2 is available in 17 colours.

Material	32% cotton, 48% polyacrylics, 20% polyester
Weight	700 g/m ² (20.6 oz/y ²)
Width	152 cm +/- 3 cm (60")
Abrasion resistance	40,000 Martindale
Fastness to light	Type 5
Pilling	Grade 3-4
Fastness to rubbing	Grade 3-4 dry and wet



Laser Home/Office, F40

vitra.



With its distinctive woven structure, Laser makes a robust and striking cover fabric. The varied palette offers a wide selection of colours, with the duotones showing off the woven structure to even greater advantage. Practical and easy to care for, as well as durable and highly abrasion-resistant, Laser is also well suited for office environments.

Laser is available in 35 colours.

Material	100% polyester Trevira CS
Weight	520 g/m ² (15.3 oz/y ²)
Width	145 cm +/- 2 cm (57")
Abrasion resistance	40,000 Martindale
Fastness to light	Type 6
Pilling	Grade 4-5
Fastness to rubbing	Grade 4-5 dry and wet

 17 ice blue/ivory	 55 grass green	 56 teal blue	 18 dark blue/ivory	 57 dark blue	 37 nero/moor brown
 13 stone grey	 09 green	 29 petrol/moor brown	 51 ice blue	 21 dark blue/moor brown	 50 black brown
 23 yellow/pastel green	 26 mint/pastel green	 28 light grey/forest	 20 ice blue/moor brown	 03 dark grey	 36 nero/cognac
 25 light grey/pastel green	 27 mint/forest	 22 dark blue/forest	 19 blue/moor brown	 04 black	 06 dark red

 35 red/moor brown	 53 poppy red	
 01 red	 31 pink/poppy red	 05 warmgrey
 33 marron/poppy red	 30 light grey/poppy red	 16 warmgrey/ivory
 32 red/poppy red	 24 yellow/poppy red	 10 ivory

Linho Home, F80

vitra.



The high-quality linen fabric Linho is manufactured in Belgium, from the plant to the finished textile. It has the slightly irregular appearance that is typical of linen yarn. The fabric is cool and dry to the touch, with natural earthy tones that exhibit a Mediterranean flair. Due to its high percentage of linen, Linho tends to form elegant creases, lending a natural look to soft upholstered furniture.

Material	9% polyamide, 91% linen
Weight	450 g/m ² (13.3 oz/y ²)
Width	137 cm +/- 2 cm (54")
Abrasion resistance	18,000 Martindale
Fastness to light	Type 5
Pilling	Grade 3
Fastness to rubbing	Grade 3 dry and wet

Linho is available in 10 colours.



Mello Home, F40



Mello is an elegant cotton fabric with a pleasant softness and cool tactile qualities. Thanks to a thicker melange yarn of recycled cotton, the robust twill weave has a lively yet balanced appearance. The understated colour palette for Mello ranges from pastel tones to natural, earthy shades and darker hues.

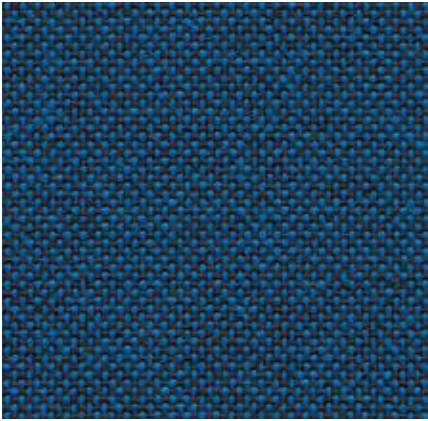
Material	80% cotton, 20% polyester
Weight	530 g/m ² (15.6 oz/y ²)
Width	142 cm +/- 2 cm (56")
Abrasion resistance	30,000 Martindale
Fastness to light	Type 5
Pilling	Grade 4
Fastness to rubbing	Grade 3-4 dry and wet

Mello is available in 9 colours.



Plano Home/Office, F30

Exclusively for the Mariposa Club Armchair!



Plano is a robust plain weave with a flat, even texture. The wide palette of duotones with new, delicate washed-out shades includes many relatively neutral hues, a good number of which are coordinated with the Hopsak colour range. Thanks to its durability and longevity, Plano is also an ideal choice for office furnishings.

Plano is available in 39 colours.

Material	100% polyester
Weight	265 g/m ² (7.8 oz/y ²)
Width	142 cm +/- 2 cm (56")
Abrasion resistance	80,000 Martindale
Fastness to light	Type 6
Pilling	Grade 4-5
Fastness to rubbing	Grade 4-5 dry and wet

 05 cream white/ sierra grey	 34 grass green/ forest	 12 light grey/ice blue	 81 blue/coconut	 19 sierra grey	 73 nero/coconut
 18 light grey/sierra grey	 61 classic green/ cognac	 17 forest/sierra grey	 86 dark blue/brown	 74 sierra grey/nero	 66 nero
 39 yellow/pastel green	 41 classic green/ forest	 40 coconut/forest	 13 nero/ice blue	 69 dark grey	 54 brown
 68 avocado	 52 mint/forest	 43 petrol/nero	 87 nero/cream white	 62 dark grey/nero	 75 marron/nero
 67 cognac	 72 poppy red	 84 poppy red/ champagne			
 11 marron/cognac	 07 orange	 15 pink/sierra grey	 99 cognac/parch- ment		
 98 dark red/nero	 96 red/cognac	 16 dark red/ice blue	 20 tobacco/cream white		
 97 red/coconut	 63 red/poppy red	 80 coffee	 03 parchment/ cream white		

Nubia Home, F100

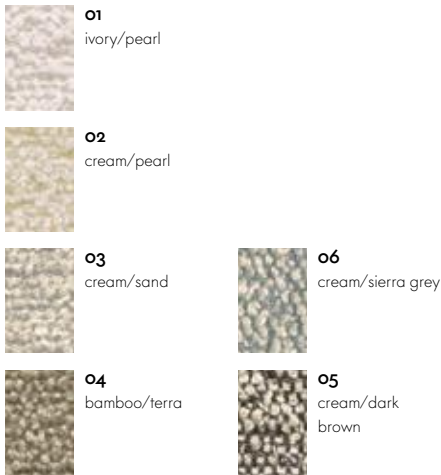
vitra.



Nubia is a blended fabric with a very lively, natural appearance. Its fine sub-structure is interspersed with voluminous bouclé yarn, which gives the fabric depth and a soft, inviting touch. The varying combinations of yarns in natural tones yield either contrasting or calm colour compositions with a distinctly Mediterranean flair.

Nubia is available in 6 colours.

Material	2% polyamide, 30% new wool, 25% polyacrylics, 43% polyester
Weight	570 g/m ² (16.8 oz/y ²)
Width	140 cm (55")
Abrasion resistance	35,000 Martindale
Fastness to light	Type 5
Pilling	Grade 4
Fastness to rubbing	Grade 3-4 dry and wet



Olimpo Home, F60



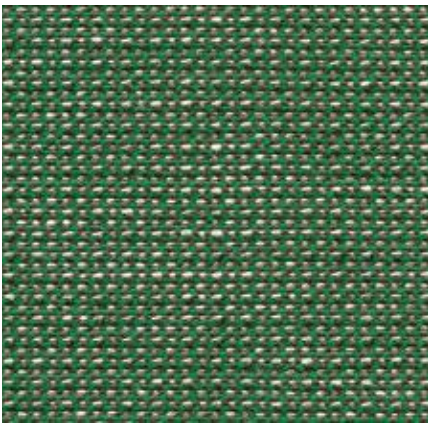
The typical linen texture of Olimpo gives the fabric a very fine and natural overall appearance. The fabric's high percentage of linen, clearly evident to the touch, results in comfortably cool conditions for the sitter. Thanks to the combination of viscose and linen, the fabric is durable and abrasion-resistant and exhibits a fine sheen.

Olimpo is available in 10 colours.

Material	70% linen, 30% rayon
Weight	520 g/m ² (15.3 oz/y ²)
Width	146 cm +/- 3 cm (57")
Abrasion resistance	30,000 Martindale
Fastness to light	Type 5
Pilling	Grade 3-4
Fastness to rubbing	Grade 3-4 dry and wet



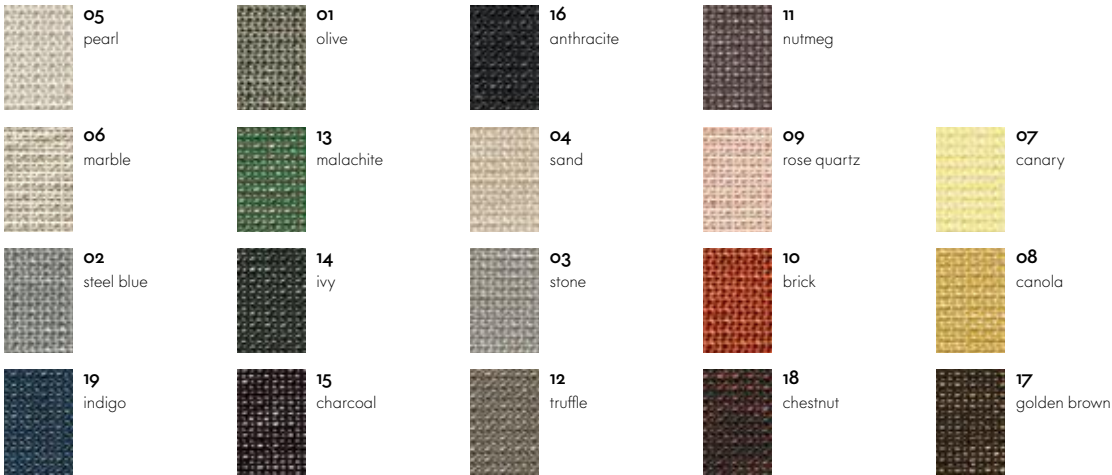
Reed Home, F100



The elegant finely patterned fabric Reed is a blend of linen, wool and cotton. The structure of the fabric designed by Hella Jongerius has a hand-made look, its irregular lively linen yarn lending the fabric a natural expression. Reed is cool and soft to the touch and can be perfectly combined with other fabrics and materials.

Reed is available in 19 colours.

Material	7% polyamide, 48% cotton, 25% new wool, 20% linen
Weight	400 g/m ² (11.8 oz/y ²)
Width	142 cm +/- 2 cm (56")
Abrasion resistance	50,000 Martindale
Fastness to light	Type 5
Pilling	Grade 3-4
Fastness to rubbing	Grade 3-4 dry and wet



Savana Home, F80



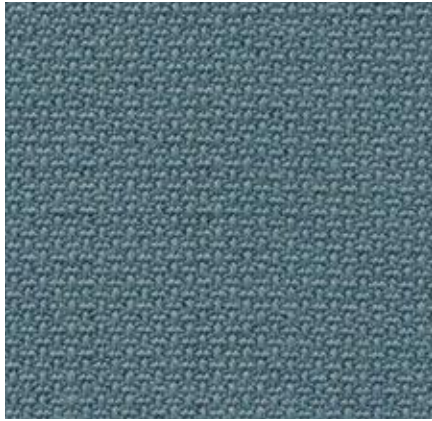
Savana is a blended fabric woven from yarns of varying thickness, which give it an irregular texture with a lively and elegant appearance. A palette of subdued and natural earth tones, along with the dry, pleasant feel of the textile, emphasise the fabric's Italian flair.

Savana is available in 8 colours.

Material	8% polyamide, 19% cotton, 50% polyacry- lics, 23% linen
Weight	820 g/m ² (24.2 oz/y ²)
Width	140 cm (55")
Abrasion resistance	30,000 Martindale
Fastness to light	Type 5
Pilling	Grade 3-4
Fastness to rubbing	Grade 3-4 dry and wet



Volo Home/Office, F60



Volo is a finely structured wool blend with a refined weave that gives it an elegant appearance. This expressive textile shows strong solid colours to full advantage while simultaneously offering pleasant tactile qualities. With its soft look and appealing texture, Volo is a perfect fit for home interiors, but it is also well suited for use in the contract sector.

Volo is available in 17 colours.

Material	15% polyamide, 85% new wool
Weight	435 g/m ² (12.8 oz/y ²)
Width	145 cm +/- 3 cm (57")
Abrasion resistance	100,000 Martindale
Fastness to light	Type 6
Pilling	Grade 4-5
Fastness to rubbing	Grade 4-5 dry and wet



Covers have a decisive influence on the appearance and characteristics of upholstered furniture. Along with the type of material, weave and aesthetic features of the textile, a major role is played by technical properties such as resistance to abrasion, fading or stains.

Function and performance are primarily determined by the type of fabric used. In general, synthetic fibres are superior to natural fibres in terms of their technical characteristics. For this reason, blends of different materials are employed to combine the advantages of the individual fibres.

In the following, you will find some of the key features of the textiles used by Vitra in its upholstery covers:

Cotton (CO)

Skin-friendly natural fibre of plant origin, comfortable to the touch, readily absorbs moisture. Often inferior to synthetic fibres with regard to colourfastness and light resistance; flat weaves susceptible to pilling.

Linen (LI)

Natural fibre of plant origin with slight lustre, cool and comfortable, repels dirt, no pilling. Limited colourfastness to light and crocking, creases easily.

Wool (WO)

Elastic natural fibre of animal origin, naturally self-cleaning – a brief airing disperses absorbed odours, leaving the wool smelling neutral and fresh again. Good resistance to light and abrasion, highly absorbent, minimal creasing, low flammability. Subject to pilling and matting.

Polyester (PE), Polyacrylic (PA), Viscose (VI)

Synthetic, highly uniform, lightfast fibres. The non-absorbent properties of synthetics can be mitigated with fibre blends and weaving techniques.

The overall look of a piece of furniture is influenced by the colour and type of cover fabric, its properties (elastic or non-stretch) as well as the upholstery technique (removable or attached covers). Consequently, a sofa can take on a different appearance depending on the cover material. Generally speaking, cover fabrics with some elasticity are less susceptible to creases and puckering, since they have an adaptable fit on three-dimensional forms. Heavier cover materials such as Laser or Credo drape more smoothly while thinner materials exhibit a finer rippling effect.

USEFUL FACTS ABOUT UPHOLSTERY

Vitra has over fifty years of experience in the production of upholstered furniture. Premium materials, skilled craftsmanship and high quality standards at Vitra are a guarantee for long-lasting products. In Vitra's own test centre, our upholstered furnishings are regularly subjected to a wide range of tests that far exceed common standards.

Care instructions:

Exposure to direct sunlight should be avoided, since ultraviolet rays can cause cover materials to fade.

To retain the original fullness and shape of your sofa, cushions should be regularly shaken and plumped.

Folds and creases from sitting can be prevented in all types of upholstery by smoothing the cover material after use.



Care instructions:

All Mariposa covers are removable. Fabric covers can be taken to a professional cleaner. Prior to treatment, please be sure to note the material composition of the cover fabric.

Should you ever need to replace individual parts or covers due to wear and tear, please contact your local Vitra retailer.

