

Monopod

Jasper Morrison, 2008

vitra.



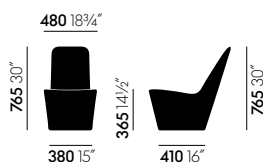
Monopod is a sculptural piece, vaguely reminiscent of primordial objects made of wood or stone. The chair has a sturdy, weighted presence, tapering with an elegant curve to a wedge-shaped backrest.

As a compact visitor chair, Monopod is a perfect companion for sofas and larger armchairs in home interiors. Thanks to its solid structure, it can also be used in public settings such as lounges and reception areas. The upholstered plastic shell structure allows Monopod to retain its precise shape even after extended use. Covered in fabric or leather, the chair is surprisingly comfortable despite its apparent simplicity.

Materials

- **Body:** polyethylene.
- **Seat and backrest upholstery:** polyurethane foam.
- **Seat height:** 365 mm (285 mm with applied load, measured in accordance with EN 1335-1).

DIMENSIONS (in accordance with EN 1335-1)



Monopod

Plano Home/Office, F30



Plano is a robust plain weave with a flat, even texture. The wide palette of duotones with new, delicate washed-out shades includes many relatively neutral hues, a good number of which are coordinated with the Hopsak colour range. Thanks to its durability and longevity, Plano is also an ideal choice for office furnishings.

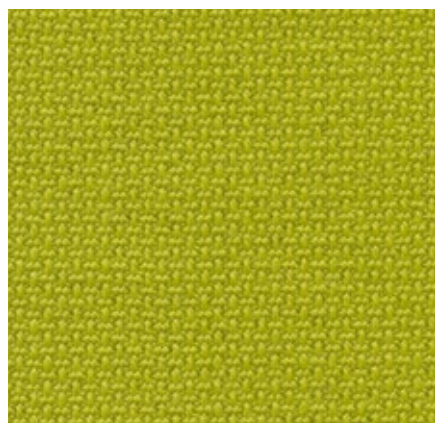
Plano is available in 39 colours.

Material	100% polyester
Weight	265 g/m ² (7.8 oz/y ²)
Width	142 cm +/- 2 cm (56")
Abrasion resistance	80,000 Martindale
Fastness to light	Type 6
Pilling	Grade 4-5
Fastness to rubbing	Grade 4-5 dry and wet

 05 cream white/ sierra grey	 34 grass green/ forest	 12 light grey/ ice blue	 81 blue/coconut	 19 sierra grey	 73 nero/coconut
 18 light grey/ sierra grey	 61 classic green/ cognac	 17 forest/sierra grey	 86 dark blue/brown	 74 sierra grey/nero	 66 nero
 39 yellow/pastel green	 41 classic green/ forest	 40 coconut/forest	 13 nero/ice blue	 69 dark grey	 54 brown
 68 avocado	 52 mint/forest	 43 petrol/nero	 87 nero/cream white	 62 dark grey/nero	 75 marron/nero

 67 cognac	 72 poppy red	 84 poppy red/ champagne	
 11 marron/cognac	 07 orange	 15 pink/sierra grey	 99 cognac/ parchment
 98 dark red/nero	 96 red/cognac	 16 dark red/ ice blue	 20 tobacco/ cream white
 97 red/coconut	 63 red/poppy red	 80 coffee	 03 parchment/ cream white

Volo Home/Office, F6o



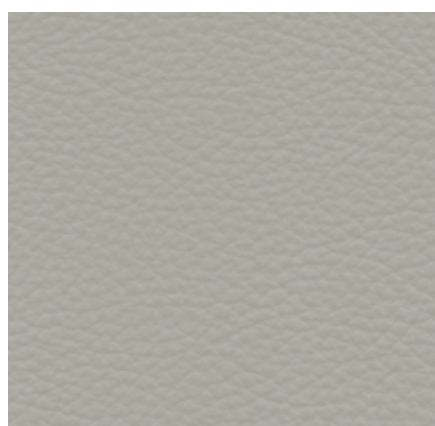
Volo is a finely structured wool blend with a refined weave that gives it an elegant appearance. This expressive textile shows strong solid colours to full advantage while simultaneously offering pleasant tactile qualities. With its soft look and appealing texture, Volo is a perfect fit for home interiors, but it is also well suited for use in the contract sector.

Volo is available in 17 colours.

Material	15% polyamide, 85% new wool
Weight	435 g/m ² (12.8 oz/y ²)
Width	145 cm +/- 3 cm (57")
Abrasion resistance	100,000 Martindale
Fastness to light	Type 6
Pilling	Grade 4-5
Fastness to rubbing	Grade 4-5 dry and wet



Leather Home/Office, L2o



The standard grade leather used by Vitra is a robust cowhide leather, dyed-through, pigmented and embossed with an even grain pattern. Since it is hard-wearing and easy to maintain, it can also be used in office environments.

Leather is available in 16 colours.

Material	Robust cowhide with a distinctive, even grain
Fastness to light	Type 6
Thickness	1.1-1.3 mm
Fastness to rubbing	Grade 4 dry and wet



Leather Premium Home/Office, L40



Leather Premium is a relatively smooth cowhide leather with a flat grain and fine top sheen. It is dyed-through and lightly pigmented. The semi-aniline leather is soft to the touch and available in 22 colours.

Material	Semi-aniline nappa leather with a very soft and supple feel
Fastness to light	Type 5
Thickness	1.1–1.3 mm
Fastness to rubbing	Grade 4 dry and wet

