

HermanMiller
Setu®



Instant comfort
for anyone, anywhere



Setu
Designed by Studio 7.5

The function and contours of Setu were shaped by the world around us. The designers of Studio 7.5 observed the ways technology has changed how we work, where we work, and how we move throughout the day. We're working more collaboratively, in a variety of settings—but spending less time in each spot. We expect to be able to work anywhere and everywhere, and we need furniture that can do the same.

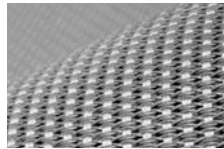
While technology has changed much about the nature of work, it hasn't changed how we all like to work: in comfort. The Setu family includes multipurpose chairs, stools, lounge chairs, and ottomans, designed to deliver instant comfort from the moment you sit down. A complementary suite of tables supports collaboration in three distinct working postures.



Performance

Material innovation gives Setu Chairs their unique combination of flex and strength. The Kinematic Spine™ uses two types of polypropylene to control resistance as you recline and to support your weight, without a tilt mechanism. It bends and flexes with every movement, responding to the natural ways your body moves.

More structural element than textile, the finely tuned Lyris 2™ elastomeric material creates Setu's one-piece seat and back. Lyris 2 works with Setu's Kinematic Spine to distribute your weight evenly and conform to your contours. The open weave also aerates your body to keep you comfortable. On upholstered Setu Chairs, the C-Layer suspension works with a variety of textiles, adding a degree of structural support to the fabric.

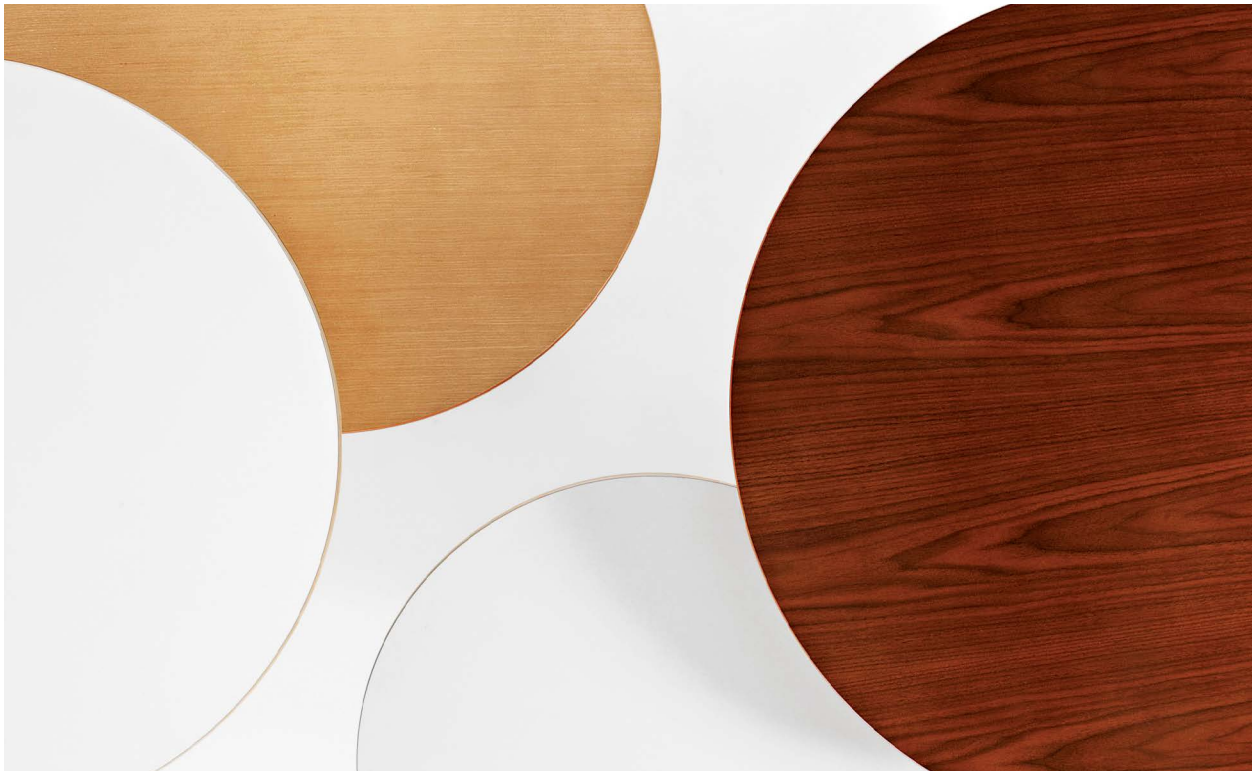


The pliable Lyris 2 seat and back suspension adapts to your sitting bones, providing contouring comfort as well as aeration.



The versatility of the Kinematic Spine extends the Setu concept to support a variety of postures. With the Setu Lounge Chair, you can choose your ideal reclining position without making a single adjustment.

The Setu Multipurpose Chair has a height adjustment, and that's it. There's nothing to tinker with, nothing to tweak, nothing to think about.



Setu Tables are available in four heights, three diameters, and a variety of surface materials to support all the ways you like to work: sitting, lounging, or standing.

Design

Setu is Studio 7.5's solution for today's more collaborative, less formal workspaces. From the graceful curve of its ribbon arms to the durable, uncoated H-Alloy™ base, every part of the Setu Chair was painstakingly shaped and reshaped to ensure that each molecule falls into the right place to deliver the desired functionality. The result is an environmentally sensitive design that uses less material—only 17 pounds for the multipurpose chair—to support people of all sizes, up to 300 pounds (136 kg). A range of upholstery and material options means you can outfit Setu to serve as a focal point or to blend into any space where you work or live.

About Studio 7.5

Designers Claudia Plikat, Burkhard Schmitz, and Carola Zwick and engineer Roland Zwick founded Berlin, Germany—based industrial design firm Studio 7.5 in 1992. Their designs for Herman Miller, including Setu Chairs, Mirra® and Mirra 2 Chairs, and Metaform Portfolio™, reflect a desire to give people more control over their work environments and tools.



Claudia Plikat, Burkhard Schmitz, Carola Zwick, and Roland Zwick

Materials

Setu's materials complement its innovative performance. Choose the conforming comfort of a Lyris 2 suspension seat and back, or opt for traditional upholstery without sacrificing support, thanks to the C-Layer suspension. The materials below reflect only a portion of the textiles available. Visit hermanmiller.com/materials to see our complete textile and materials offering.

Setu Chairs

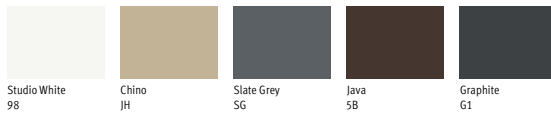
Seat & Back Lyris 2



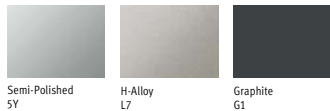
Upholstered Seat & Back Noble



Frame Finish



Base Finish

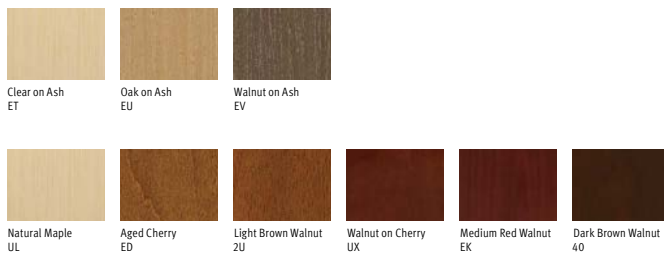


Setu Tables

Top Solid Laminate



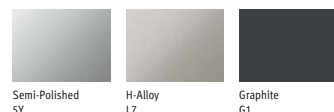
Wood & Veneer



Column Finish



Base Finish



Setu Chairs

Family

Multipurpose Chair
Stool
Lounge Chair
Ottoman

The following information applies only to Setu Multipurpose Chairs.

Overview

Maximum User Weight 300 lbs/136 kg

Seat/Back Material

Lyris 2 Suspension Optional
Suspended Upholstery Optional

Seat Height

Standard-Height Range 15½"–20"
High-Height Range 17"–21½"
Fixed-Height Range 18½"

Seat Depth

Fixed Seat 15"

Arm Options

No Arms
Fixed Arms

Base Options

5-Star Base with Casters (Standard- or High-Height)
4-Star Base with Glides (Fixed-Height only)

Environmental Highlights

Recyclability Up to 96%
BIFMA level® 3
GREENGUARD® Gold
Cradle to Cradle® Silver
Global GreenTag® Green Rate Level A

Setu Tables

Family

Coffee Table
Lounge Table
Work Table
Standing Table

Height

Coffee Table 16"
Lounge Table 22"
Work Table 29"
Standing Table 42"

Diameter

Coffee Table 30" or 36"
Lounge Table 30" or 36"
Work Table 30", 36", or 42"
Standing Table 30" or 36"

Surface Material Options

Solid Laminate
Wood & Veneer

Environmental Highlights

Recyclability Up to 65%
Cradle to Cradle Silver (Veneer only)

For more information, please visit hermanmiller.com or call 888 443 4357.

® level is a registered trademark of BIFMA International.

® GREENGUARD is a registered trademark of the GREENGUARD Environmental Institute.

® Cradle to Cradle is a registered trademark of McDonough Braungart Design Chemistry.

® Global GreenTag is a registered trademark of Global Green Tag Pty Ltd.

Printed in the USA. Please recycle.

© 2014 Herman Miller, Inc., Zeeland, Michigan O.CQ202

All rights reserved.