

Coffee Table

Isamu Noguchi, 1944

vitra.



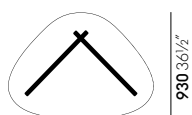
Coffee Table

The sculptor and designer Isamu Noguchi described the Coffee Table as his best furniture design – no doubt because it is reminiscent of his biomorphic sculptures in bronze and marble from the same period, translating the typical forms of the latter into a piece of sculptural furniture. The heavy plate glass top of the Coffee Table rests on two identical wooden elements placed at right angles.

Materials

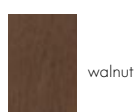
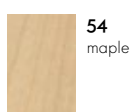
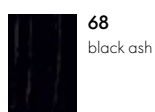
- **Table top:** heavy glass, 19 mm, ground rounded edges.
- **Base:** solid ash in black, walnut or maple, lacquered finish, rounded edges.
- **Origin of wood:** ash (*Fraxinus excelsior*), walnut (*Juglans nigra*) and maple (*Acer platanoides*) from Western Europe and/or Poland.

DIMENSIONS



Coffee Table

SURFACES AND COLOURS



Base

Article no. 09157802

Vitra is represented worldwide. Your local Vitra partner can be found at: www.vitra.com.

info@vitra.com | EN 2020

www.vitra.com/coffetable

